

## AZ 114S Receiver Instruction

Version: A/00

### Product Features



AZ 114S receiver

- Works with Google Assistant, Amazon Alexa and IFTTT
- Smartphone Control (Direct Wi-Fi Connection) Compatible with Siri (For iOS12 or above & iPhone 6S or above only)
- External switch Control
- One module per motor
- Input voltage: AC 110~240V
- Maximum output power: 200 W
- Wi-Fi frequency: 2.4GHz only
- Working temperature: -10°C ~ +55°C

### Matchable Motor

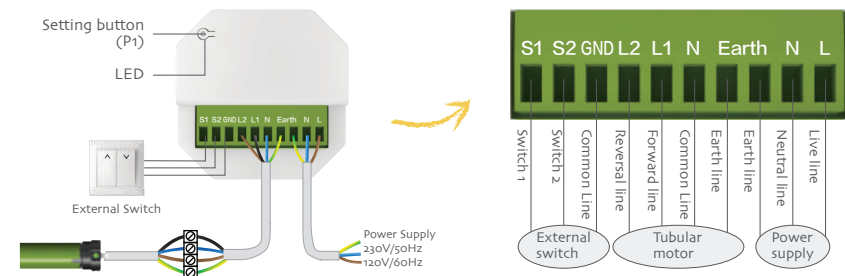


Matchable S/SL type motors

### Mode Of Connection

Setting button operation	
Pairing	Press and hold the setting button 2S, the indicator will flash fast then release
Resetting	Press and hold the setting button 10S, the indicator will flash slowly then release

Indicator status	
Quick flash	Ready for pairing
Slow flash	Under pairing
Light on	Wi-Fi is connected
Light off	Working fine



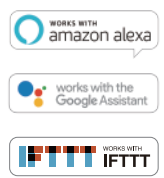
### Download Apps

Note: Please scan below QR code or search "Shade connector" directly on App Store or Google play.



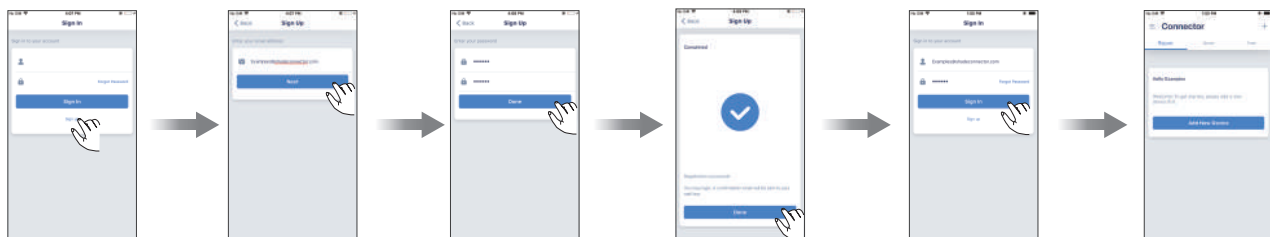
### More Video Help

Note: Please scan below QR code to learn about how to link up Wi-Fi module with home router, setup Connector APP, and establish with other IoT applications.



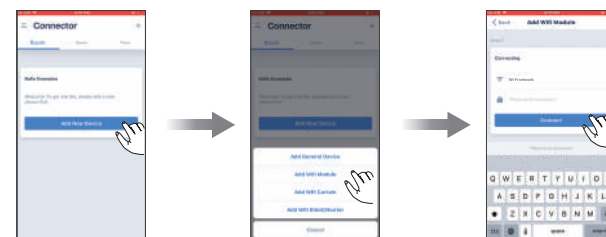
## 1. Sign Up & Sign In

Please create a user account in the first use by tapping "Sign up", then sign in.



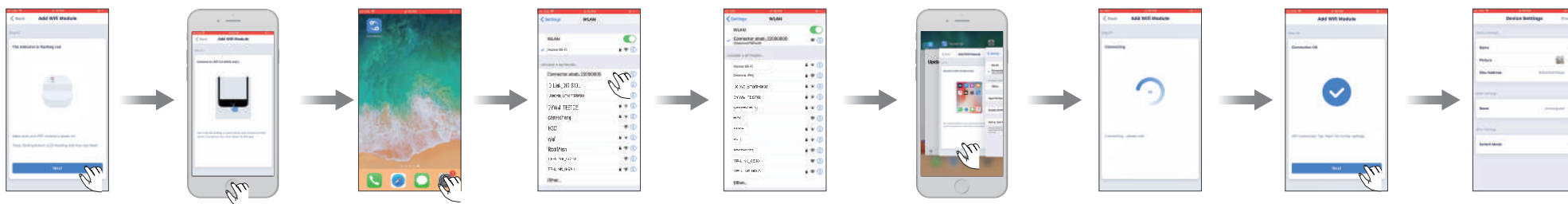
## 2. Wi-Fi Module Set Up

1, Enter your Wi-Fi network password (Ensure your smartphone is connected to the desired 2.4GHz Wi-Fi network)



## 2. Wi-Fi Module Set Up

2, Link up Wi-Fi module with home router



## 3. Other Settings

1, External switch mode selection



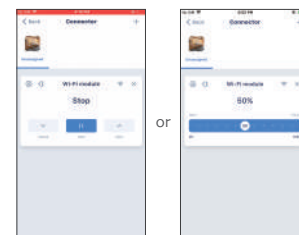
Wi-Fi module is compatible with multiple external switch modes. Pls contact your dealer for more information if you have doubts

2, Percentage limits setting



Wi-Fi module supports "percentage control", select "Yes" to calculate limit before usage, select "No" to skip.

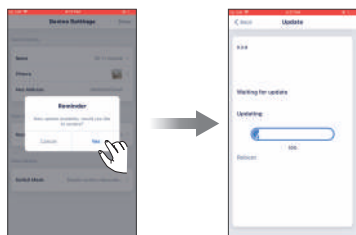
3, Wi-Fi module control panel



Before position calculation

After position calculation

## 4. Firmware update



The system may offer new firmware after new pairing, please select "Yes" to update Wi-Fi module firmware.